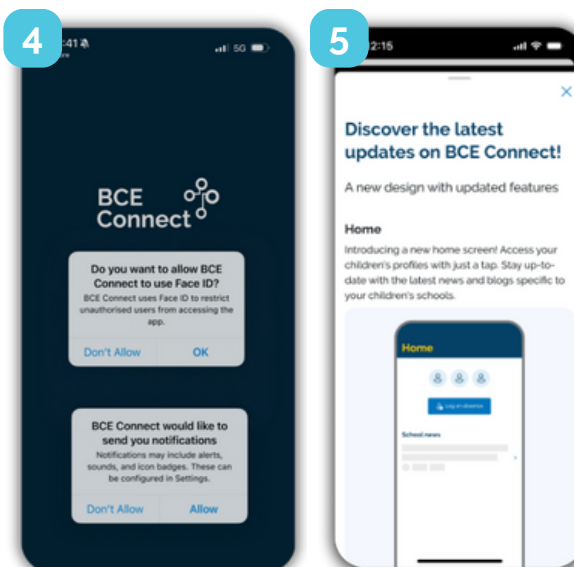
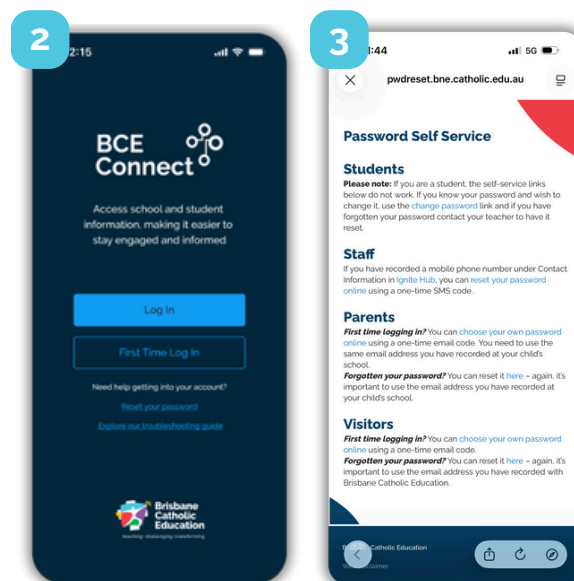


Your guide to setup your BCE Connect account.

- 1 **Scan** the QR code or go to your App Store and **download** the latest BCE Connect App.
- 2 Open the BCE Connect app and select **First Time Log In** button.
- 3 On the **Password Self Service** page, refer to the instructions for **Parents**. **Choose your new password** using the email address you provided to your child's school.
- 4 Now **login** to BCE Connect using your credentials. **Enable** biometrics for an easier login and **allow** push notifications to stay up to date with all your school information.
- 5 You're all set! Tap **Get Started** to explore BCE Connect and enjoy quick, easy access to student and school information.



Having trouble?

Scan the QR code to open our **BCE Connect Troubleshooting Guide** or visit <https://bceconnect.bne.catholic.edu.au>. If you have any further issues, please contact your school for help.